

- 18. Emperius Building (1908; additions 1920-21),**
now *Milagos Coffeehouse and other businesses*
529 Main St. (at State and Main)

Alamosa Historic Registry 2005

Built by the noted entrepreneurial Emperius family, the dark red brick and distinctive detailing of this two-story commercial block represents well the architectural style typical of commercial buildings in Alamosa in the early 1900s. Famous Colorado photographer O.T. Davis (1859-1945) had his studio here on State Ave. for many years.



- 19. Frank Building (1907),**
now *Narrow Gauge Newsstand*
602 Main St.

This red brick commercial block is embellished with tan brick details and wood cornices. Built by Silas Frank of Creede in Alamosa's boom years, the two-story structure became Nathan & Herrick's men's clothing and shoe store, later Sherman Drug Co. Upstairs rooms were rented out.



- 20. Denver & Rio Grande Railroad Depot (1908-9)**
now *Colorado Welcome Center, Rio Grande Scenic Railroad, Alamosa County Chamber of Commerce*
610 State Ave.

State Register 1993; National Register 1993

The depot operated as an important transfer point for passengers, mail, and freight traveling between Creede, Santa Fe, and Durango. Built in 1908-9 to replace an 1878 depot destroyed by fire, the west section was added in 1930. Passenger and freight use sharply decreased in the 1950s, leading to the station's closure. The depot now houses the Colorado Welcome Center, the Rio Grande Scenic Railroad, Alamosa County Chamber of Commerce, and other economic development offices.

- 21. City of Alamosa Water Tower (1911)**
701 Ross Ave.

Alamosa Historic Registry 2011

Visible from the railroad tracks and throughout Alamosa, the steel water tower was constructed in 1911 by the City of Alamosa to provide a source of drinking water and fire suppression for its growing population. It still serves the City today.

- 22. Original Post Office site (1886)**
527 Sixth St.

With frontage along the railroad, Sixth St. was once Alamosa's primary street (Front St.), which bustled with carriages, shops, and activity. City Hall and the Fire Dept. were located at 611 Sixth St. at least as early as 1904.

- 23. American National Bank Building (1909),**
now *Freedom Financial*
500 State Ave.

State Register 1999; National Register 1999; Alamosa Historic Registry 2006

The building was constructed during a period of rapid growth in the San Luis Valley and reflects the optimism associated with Alamosa's early downtown commercial development. This blond brick building is an excellent example of Arcaded Block, a popular commercial building type during the early decades of the 20th century. The building was a bank until 1951, when it became a flower shop. It returned to bank use in 2003. State Historical Fund restoration 2002-3.



- 24. San Luis Hotel (c. 1915), now Thai House**
525 Main St.

Historic photos and maps document the San Luis Hotel, where Billy Adams (1861-1954), former Colorado Governor and founder of Adams State College, lived the last years of his life.

- 25. Bain's Department Store (1935),**
now *Rainbow's End and Hunt Ave. Boutique*
510 Main St. and 509 Hunt Ave.

State Register 1995/1998
The building is representative of many built during the Depression, making extensive use of recycled materials.

- 26. Freiberger Building (1908-9), now Porter Realty**
503 Main St.

Alamosa Historic Registry 2007
Built of blond brick like the American National Bank building, this was Alamosa's first hospital. Dr. Edgar Freiberger, the physician and surgeon who planned, erected, and equipped the building, opened the hospital in 1910. He died of illness just one year later, at the age of 38, and the hospital closed in 1912. The building later housed offices, a rooming house, and a paint business.

National Register: National Register of Historic Places
State Register:

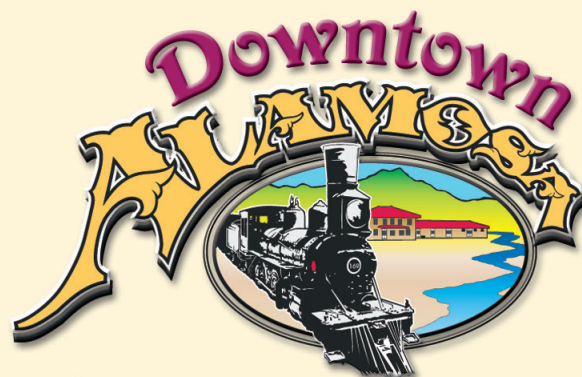
Colorado State Register of Historic Properties

The State Historical Fund is a program of History Colorado

Produced by City of Alamosa's Historic Preservation Advisory Committee

Sponsored by Alamosa County Marketing District and City of Alamosa

Revised 2013



Where the Rails Meet the Rio Grande

Historical Walking Tour



D&RG Railroad Depot (1908-09)

A stroll around Alamosa's downtown reveals its history and small town charm. From red brick to pressed metal ornamentation and glazed colored tile, Alamosa is a study in the architectural trends that have passed through the nation since the 19th century—late Victorian, commercial brick, Mission Revival, and Art Deco styles stand side by side in this tightly constructed area.

Main Street runs parallel to the railroad, which lies less than two blocks to the south. The town plat submitted in April 1878 by the president of the Denver & Rio Grande Railroad, Alexander Cameron Hunt, claimed the San Luis Valley as the next stage of narrow gauge line development to Durango and Santa Fe, with Alamosa as its hub. From 1890 until c. 1940 passenger and freight trains steamed their way between Alamosa and Denver, Durango, Santa Fe, Salida, and Creede. The 1909 depot at downtown's southern entrance and the historic brick and stone buildings that anchor downtown are reminders of the boom the town experienced in the early 20th century as the railroad brought commerce and a blossoming population to Alamosa.

Downtown Alamosa Historical Walking Tour

- 1. Denver & Rio Grande Railroad Locomotive No. 169 (1883); B-1 Business Car (1881)**

Cole Park, near Rio Grande bridge on Hwy 160 East
State Register 2000

Built in 1883, this narrow gauge, coal fired, ten-wheeler steam locomotive remained in service for over 50 years. In 1939 it was taken out of storage to represent the D&RGW Railroad at the World's Fair in New York. The increased pulling capacity and speed of the six large driver wheels made it one of the fastest narrow gauge engines built. In 1941 No. 169 came to rest in Cole Park, a gift to the city from the railroad.



- 2. BPOE Elks Lodge #1297 (1956)**
406 Hunt Ave.

The Elks Lodge was established in Alamosa in 1912. The 1956 yellow brick building, their second lodge home, was partly funded through revenues from the Elks' slot machines, which were legal at the time. Hot water heat in the concrete floors was innovative and served the lodge for nearly 50 years. Inside a large mural by Jocelyn Lillpop Russell depicts elk in a mountain scene.

For more information on historic Alamosa,
visit alamosaAURA.org • alamosa.org
cityofalamosa.org • (719) 589-4840

3. WPA-era Pumphouse (1936)

306 Hunt Ave. (at Cole Park)

Originally a brick pumphouse, the building housed the City Jail and later the Police squad room and jailer's quarters from the 1950s until 1994 when it became the local history museum. The San Luis Valley History Center Museum is now located at Hunt Ave. and Fourth St.

4. First Public School Building in Alamosa (c. 1882),

with later modifications, now Motor Parts

304 State Ave. (at State & Third)

The Old Alamosa Schoolhouse built on the lots was sold to Alpha Ruby, the owner of the Colorado Theater Co., in 1907 and housed a dance hall from 1908 into the early 1920s.

5. Carver House (1901)

315 State Ave.

The distinctive mansard roof and arched brick framing around the windows refer to the late Victorian style.

6. St. Thomas Episcopal Church (1925-30)

607 Fourth St.

State Register 2003; National Register 2003;

Alamosa Historic Registry 2007

The parish hall was constructed in Mission Revival style by noted Denver architects William E. Fisher and Arthur A. Fisher in 1925. The sanctuary, which incorporates the Gothic windows from the old church, and the complex were completed by an unknown builder in 1930. State Historical Fund restorations 2004-9.

7. Alamosa Post Office Building (1935), now Blue Peaks

Developmental Services
703 Fourth St.

Alamosa Historic
Registry 2008;

State Register 2008;

National Register 2008

Art Deco, Mission and Classical Revival elements blend here combining architectural styles strongly represented in Alamosa. Interior features such as terracotta tile, woodwork, and other lobby details are still intact. Note the Pony Express rider above the door.



8. Alamosa County Courthouse (1936-38)

702 Fourth St. (at Fourth and San Juan)

State Register 1995; National Register 1995;

Alamosa Historic Registry 2009

The U-shaped complex is one of the county's best examples of Mission Revival style and the largest of several WPA projects built in the county during the 1930s. Using local clay and sand, more than 450,000 bricks were produced at a kiln located north of Alamosa.

9. Sacred Heart Catholic Church (1922-28)

727 Fourth St.

State Register 1996; National Register 1998;

Alamosa Historic Registry 2007

Constructed between 1922-28, the church is a graceful interpretation of the Mission Revival style designed by prominent architect Robert Willison. The interior includes outstanding murals painted by local artist Josef Steinhage that have been recognized nationally in Catholic circles. State Historical Fund restoration 2000-2.

10. Rialto Theatre (1925-26),

built as the American Legion

Building/Legion Theatre,

now Bistro Rialto

716 Main St.

Alamosa Historic Registry

2005

Built by the American Legion Dickey-Springer Post No. 113 to serve the community, this commercial block is unusual for its incorporation of retail on the streetfront, offices and meeting spaces upstairs, and a large auditorium behind. In 1927, one year after its completion, the Legion Theatre was renovated with ornate wall decoration and loges seats and renamed the Rialto Theatre. The theatre space was lost in a fire in 2003, but new owners restored and reopened the building in 2009. The architecture is a local amalgam of Craftsman, glazed commercial brick, and classical elements.

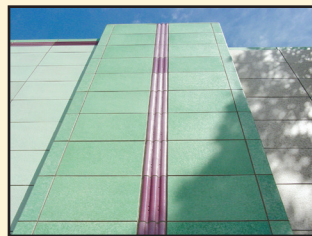


11. Lockhart's Furniture (1938);

Treasure Alley (1941)

711 and 713 Main St.

The streamlined Art Deco style is present throughout downtown Alamosa, especially in facades that incorporate glazed tile. The stunning white, green, and pink tile are expressions of this modern style.



12. Manders Building / Oddfellows Hall (1891)

703 Main St. (at Main and San Juan)

One of the first buildings on Alamosa's Fifth St. (later renamed Main St.), the Oddfellows began meeting here upstairs the year it was completed. Historically the downstairs storefronts housed retail. The building's native stone (rhyolite) was quarried in the San Juans.

13. Alamosa Masonic Hall (1887)

610 Main St. and

514 San Juan Ave.

State Register 1997;

Alamosa Historic Registry
2011

The building's elaborate stamped metal upper story represents a period of construction associated with the arrival of the railroad and the resulting ability to import prefabricated architectural elements. It was the first major building constructed on what would become Alamosa's Main Street. The back of the building including the lodge hall was built in 1922. The architects were Mountjoy and Frewen of Denver. State Historical Fund restoration of second story facade 2000, masonry restoration 2009-10, storefront rehabilitation 2012.



14. San Juan Building (1920),

now San Luis Valley Brewing Company

631 Main St. (at Main and San Juan)

Originally the second site of First National Bank of Alamosa, the brewery displays the vault door. The original Art Deco red brick structure has been transformed dramatically over the decades. An early photograph of the exterior can be viewed inside the contemporary brew pub.

15. Husung Hardware (1936)

625 Main St.

State Register 2000;

National Register 2000

Alamosa Historic Registry 2005

Constructed in 1936 with a terracotta facade and stylized ornamentation, the two-story brick building possesses the distinctive characteristics of Art Deco, one of the prevalent modern styles popular in the 1920s and '30s. This well-preserved building is considered one of the best small town expressions of Art Deco in the state.



16. Grove Theater (1912)

613-615 Main St.

For many years a movie house, the Grove occupies the site of the former Isis Theatre, which was designed by Mountjoy and Frewen and housed the Colorado Power Co. in one of its storefronts. The original theatre included a grand archway and was a striking architectural presence on Main.

17. First Baptist Church Building (1907-8),

now Mountain Valley Church

408 State Ave.

State Register 2005; National Register 2005;

Alamosa Historic Registry 2005

The oldest standing church in Alamosa, it is the only public building in Alamosa constructed of ornamental concrete block. Its exuberant asymmetrical composition with its variety of forms, textures, and materials epitomizes the Queen Anne style.

Welcome to historic downtown
ALAMOSA!

